

Analysis of land use change in the eastern Erzgebirge regarding both nature protection and flood prevention

M. MERTA ⁽¹⁾, C. SEIDLER ⁽¹⁾, E. RICHERT ⁽²⁾ AND S. BIANCHIN ⁽²⁾

⁽¹⁾ International Graduate School, Zittau, Germany (e-mail: seidler@ihi-zittau.de)

⁽²⁾ TU Bergakademie, Freiberg, Germany (e-mail: elke.richert@ioez.tu-freiberg.de)

Abstract Two different models (WBS FLAB, WaSiM-ETH) were used in the project HochNatur (flood prevention and nature conservation in the Weißeritz catchment in the Eastern Erzgebirge) to determine risk areas with quick runoff processes and to simulate the discharge. It was done in different scales, in the mesoscale Weißeritz catchment as well as two selected subcatchments with different natural and urban conditions, the Weißbach subcatchment with a well structured landscape, the Höckenbach subcatchment with a greater part of arable land.

On the basis of selected scenarios, the effect of land use changes on the runoff generation processes of an area and on the hydrograph is described. Land use changes are able to reduce the portion of quick runoff components, the water erosion and the discharge. The effect occurs especially in smaller catchments and with short heavy rains (events with a frequency of occurrence of 5 – 50 years). Depending on the present situation the changes have to include areas of more than 25% of the catchments area to cause a significant effect. It became apparent that nature conservation and flood prevention agree well in their requirements with the land use. A rich structured landscape proved to be extraordinarily positive for both, flood prevention and nature conservation.

Key words: *hydrological modeling, runoff generation, land use change*

1 Introduction

The region of the Eastern Erzgebirge (Saxony, Germany) was often affected by heavy rains causing floods. The last spectacular one was the flood of 2002. Therefore different solutions of flood prevention were discussed intensely during the last years. Beyond technical measures preventative measures like land use change can be helpful. An accurate forecast of discharge by precipitation-runoff-models with changed land use is generally possible only with large uncertainties. A substantial problem is how to parameterise the models.

Driven by the flood event of August 2002 the aim of the HochNatur-Project is to develop measures which both prevent floods and support nature conservation. A tight interdisciplinary cooperation between hydrological modeling on one side and landscape ecology studies and conservation assessment on the other plays the key role in this project (Richert, et al. 2007, Merta et al. 2006). Scientific analyses to assess the present state and to derive scenarios for future sustainable development have been carried out, for example a stream habitat survey, mapping of biotopes and endangered species, vegetation levees, analysis of surface hydraulic roughness and hydrological measurements. The results

of these comprehensive analyses will be integrated in hydrological models (expert system WBS FLAB and the precipitation-runoff model WaSiM-ETH). As a starting point the analyses of the actual state of the Weißeritz catchment with two subcatchments Red and Wild Weißeritz (research regions) were used. Major emphasis was on investigations and suggestions of measures for the subcatchments of two tributaries (Weißbach und Höckenbach) of the Wild Weißeritz (Figure 1). This way it was possible to assess the transferability on other areas. The development of scenarios by the hydrological models focuses on the definition of structures and measures with a high relevance to flood control and includes the outcomes of the assessment of the conservation value including deficits. Measures suggested by the integrative modeling will be implemented in close cooperation with local and regional stakeholders. Another important aspect of this multifunctional approach to flood and nature protection lies in the transfer and generalization of the suggested measures to other mountainous regions within Germany.

2 Material and Methods

2.1 Research area

The Weißeritz catchment (384 km²) is located in the Eastern Erzgebirge (thereof 12.3 km² in Czech Republic) and it extends from the crests at the German-Czech border over middle and lower mountain region as well as the hilly country down to the lowland of the Dresdener Elbtalweitung. Soils were mainly formed on periglacial debris. Therefore the soils, especially in the upper areas, are shallow and skeleton rich. According to the geological initial situation sandy loamy Cambisols are widespread in the research area (Figure 1a). In the upper areas poor Podzols and shallow skeletal Umbrisols are dominating, on loess silty Cambisols and Stagnosols. The valleys are usually characterised of holocene sediments. Only in the upper mountain region in the south of the Weißeritz catchment some few Fibric Histosols can be found (Mannsfeld & Richter 1995).

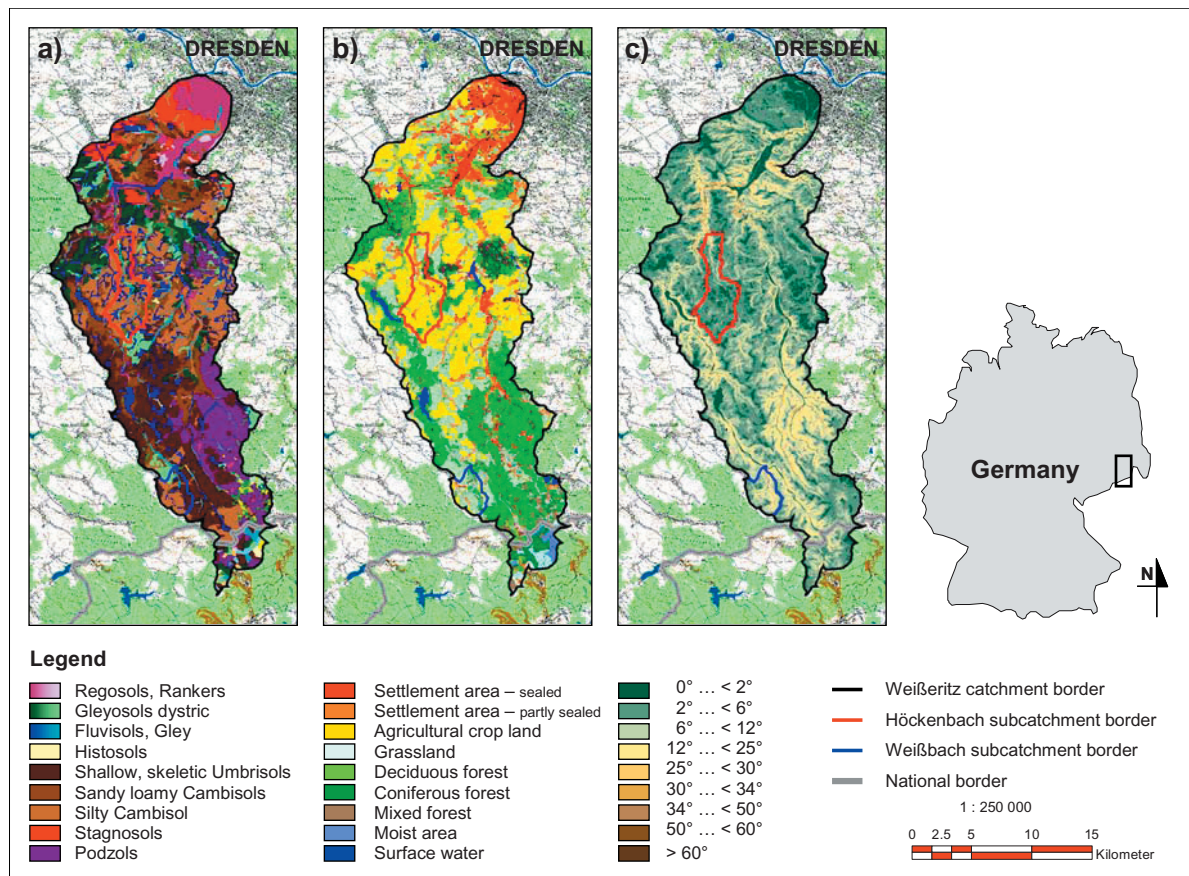


Figure 1: Weißeritz catchment. (a) Soil types – Bodenkonzepkarte 1 : 200000. (b) Land use – Color-Infrarot-(CIR)-Biotoptypen- und Landnutzungskartierung. (c) Slope – DGM 20

At present a third of the Weißeritz catchment is covered by forests (Table 1). Forest stands mainly consist of spruce, on sandstone pinewood forests also share great parts of the area (Mannsfeld & Richter 1995). Only some small woodlands consist of deciduous tree communities. Almost half of the area is used agriculturally, with considerably more agricultural crop land than grassland (Figure 1b). Agriculture dominates in the lower and middle regions. The northern part of the catchment is particularly marked by the settlement areas (city of Freital and Dresden).

The research areas Weißbach (7.4 km²) and Höckenbach (16.7 km²) distinguish a lot from each other in the actual land use and land relief (Table 1, Figure 1). The soils of the two subcatchments consist in large parts of stratified cohesive soils. A high proportion of shallow cambisols is recorded in the Weißbach subcatchment (Figure 1a). In contrast to the Weißbach subcatchment the terrain of the Höckenbach subcatchment has predominantly flat slopes nevertheless it is strongly endangered by erosion.

The Eastern Erzgebirge can be considered as a hydro-geologic unit. The above-ground and below-ground catchments are largely identical within the research area. The springs are mostly scree slope springs with a flow of < 1 l/s, which strongly react to rain fall. This is caused by interflow, which plays an essential role within the research area. However within the middle and lower regions, the arable land with silty soils shows bad infiltration conditions, which in connection with the partly very steep slopes (Figure 1c) often results in overland flow. The receiving streams, dependent on the system status (soil moisture), react quickly to precipitation events.

2.2 Models

Landscape-ecological and hydrological system analyses and models were used as methods for analysis. At the same time data was taken from the terrain for biotope and vegetation structures (actual state) and used for hydrological system analyses, which are based on the expert system WBS FLAB; (Zimmermann et al. 2001, Peschke et al. 1999) and the precipitation-runoff model WaSiM-ETH (Schulla & Jasper 2006). The two models were coupled, which firstly takes the advantage of a functional spatial structuring of the catchment, regarding the processes of runoff generation, which is taken into account for the quantitative modeling of runoff situations. In addition, risk areas can be identified for high water emergences by this procedure. A deficit or risk analysis followed the analysis of the actual state to build and judge different land usage scenarios.

Table 1: Actual land use in Weißeritz catchment (Color-Infrarot-(CIR) biotope type- and land use mapping) and in Weißbach subcatchment und Höckenbach subcatchment (biotope type mapping, Foltyn 2006)

Land use	Weißeritz catchment	Höckenbach subcatchment	Weißbach subcatchment
	Proportion of area [%]		
Forest	34	12	16
Afforestation areas		< 0.5	8
Hedges, groves, tree rows	< 0.1	1.5	1.5
Grassland, bushes, moorland	24	7	44
Agricultural crop land, horticulture	26	69	21
Surface water	1	< 0.5	< 0.5
Settlement areas, industry, infrastructure	15	9	9
Other areas	< 0.5	< 0.5	< 0.5

A knowledge-based system of the same runoff formation (Expert System – Area of Equal Runoff Components) was developed for the regionalisation of the runoff generation processes (Figure 2) (Merta et al. 2003, Zimmerman et al. 2001, Peschke et al. 1999). Starting with general available information about the area (land use and vegetation, soil types or geology, stream network and DEM) the WBS FLAB subdivides a catchment into areas in which a certain runoff process dominates. Here the quick runoff generation processes are in the focus of consideration for the high water emergences. If-then rules and factual knowledge are an essential component of the WBS FLAB. The set of rules is independently usable for geographical regions and climatic conditions. For the derivation of the set of rules “expert knowledge” was used, which is based on a generalisation of the measured and observed processes in catchments of different physiographies, geographic regions and climatic conditions. The factual knowledge are a kind of data base, which contains detailed information and parameter lists of maps, e.g. physical soil parameters, soil horizons, rooting depth, root system structure and coarse root and fine root.

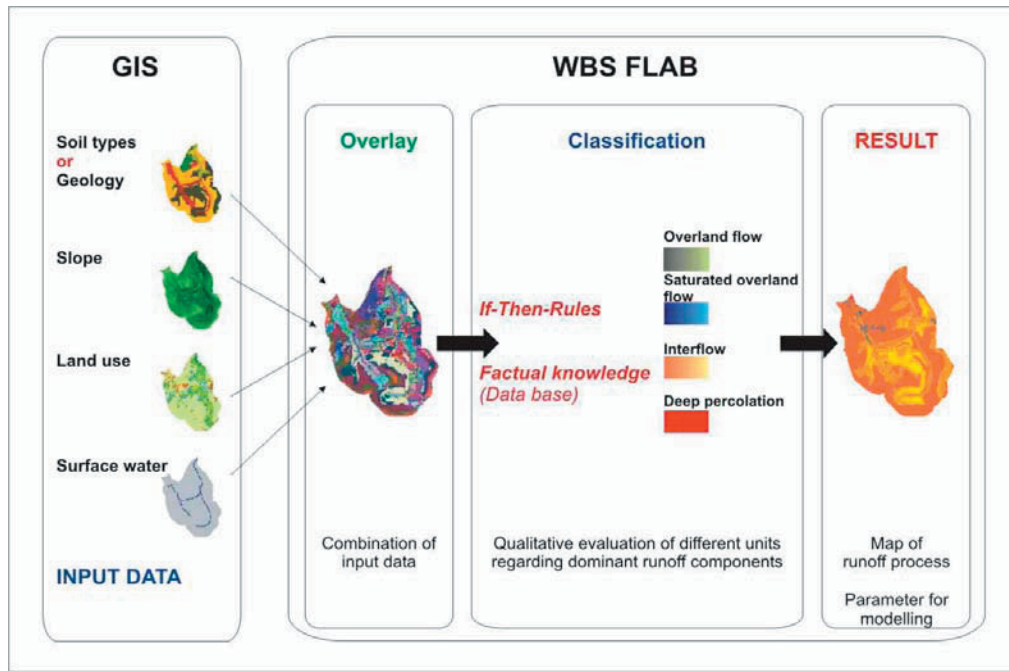


Figure 2: Structure of the Expert System FLAB

The concept based, deterministic area-distributed precipitation-runoff model WaSiM-ETH (Schulla & Jasper 2006) for natural streams was used for the description of the runoff processes. For urbanely modified streams the program SWMM (Rossmann 2005) was used in first place. The model WaSiM-ETH represents a balanced symbiosis of physical and conceptional hydrological approaches since it also allows the modelling in different time levels in mesoscale areas. Among the presently existing precipitation-runoff models, this model has very good prerequisites in order to comprehend the effects of land use on the high water discharge, e.g. (Nienhof 2001, Schulla 1997)

3 Results and Discussion

3.1 Integration of vegetation parameter into Expert System

Information about the soils is necessary in order to derive the rules for the expert system. Since soil properties are strongly influenced by the plant root system (porosity, hydraulic conductivity, storage capacity, macropores etc.; Figure 3), a visual assessment procedure was developed to characterise the attributes of root systems (depth, intensity) for a soil profile (Figure 4) and applied to root distribution pictures of various soil profiles (Figure 5).

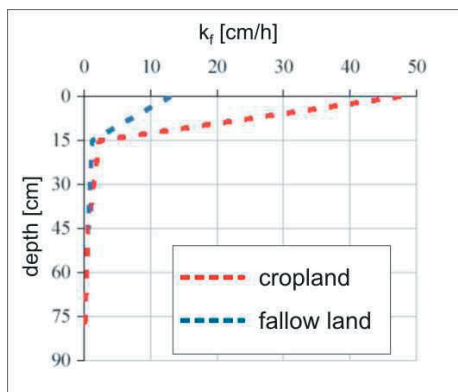


Figure 3: Saturated hydraulic conductivity in the bare soil and under crop (*Zea mays*)

This procedure requires knowledge about the vegetation type and the species composition (dominant species). By means of this scheme new rules on the impact of root systems on the soil were derived and integrated in the WBS FLAB. The improved system allows considering the vegetation's influence on the runoff processes in more detail.

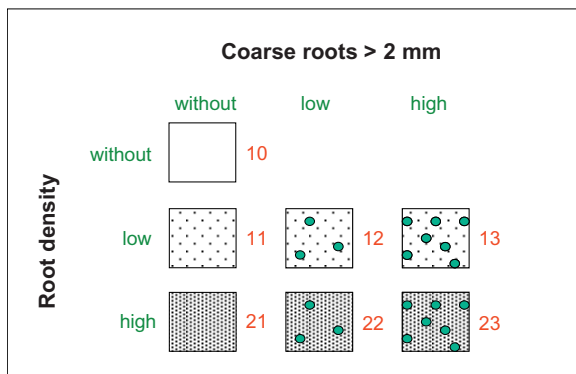


Figure 4: Assessment scheme for soil root penetration with distribution of root frequency classes

Most of the roots are normally thicker than soil pores, so they can only partly use the soil pores. During their growing period they themselves form pores. Hair roots and hyphae create medium pores and can enlarge the soil storage capacity. Medium and strong roots form macropores assuring a better percolation.

Medium roots and strong roots together are called coarse roots. The description in Table 2 exemplifies possible modifications of the soil properties by the vegetation (compare Figure 4). This information is the basis to derive new rules. Together with the already integrated information on the different soil types, this results in new soil properties. Thus a better assessment of the vegetation influence on the runoff generation processes is achieved.

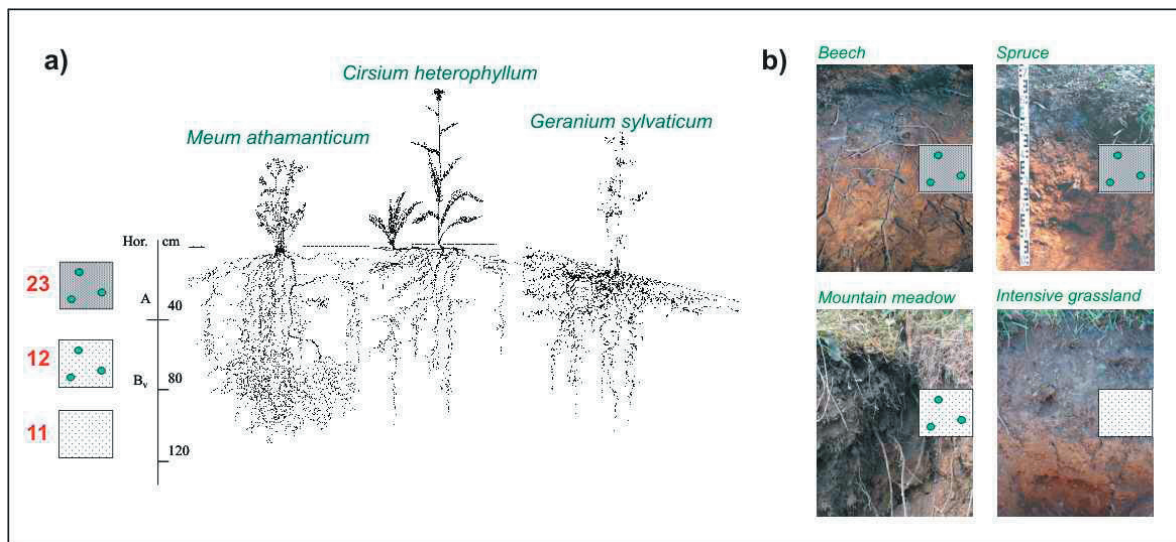


Figure 5: Rooting determination e.g. root density for dominant plants of mountain meadow (a) and for typical vegetation types of the Weißbach catchment (b)

3.2 Analysis of the actual state

The spatial distribution of runoff generation processes shows potential overland flow from areas with bad infiltration capacity especially on loess soil (Höckenbach subcatchment 43%, Weißbach subcatchment 19%, Weißeritz catchment 21%) in (Figure 6a, b, c). This mainly concerns agricultural crop land and the so far intensively used grassland (Zimmerman et al. 2006). The plough furrow sole can also cause surface-near quick interflows (Schobel et al. 2001)). As soon as the soil storage

capacity is exhausted and the soil is saturated, overland flow occurs. The intensively used grassland (fertile meadow) has a higher root density within the upper 10-15 cm only, with vastly fine roots (0.3 ... 0.7 mm). Due to that fact the storage capacity within the upper layers can increase (Sloboda & Leuschner 2002). Because of cattle track and frequently driving with agricultural vehicles the soil compaction arises and therefore also an infiltration barrier, which leads to an overland flow (e.g. Kurz et al. 2006). The flow measurements show that streams receiving intense rainfalls react very fast and therefore trigger extremely high runoffs within very short periods.

Table 2: Relevance of root density for soil properties

Low root density without coarse roots	Low root density few coarse roots	High root density many coarse roots
Sandy soils		
without modification	- slightly increasing storage capacity - no change of conductivity	- increasing storage capacity - no change of conductivity
Cohesive soils		
without modification	- slightly increasing conductivity - no change of storage capacity	- growing part of macropores - no change of storage capacity - increasing of conductivity

The quick interflow (Höckenbach subcatchment 16%, Weißbach subcatchment 33%, Weißeritz catchment 33%) occurs particularly on steeper slopes and forested (spruce) shallow soils (Figure 1 and 6). Shallow soils above impermeable subsoil generally show small storage capacities (Andreassian 2004). It is possible to increase the storage capacity of those soils slightly with afforestation due to the developing organic surface layer. Additionally a minimally higher interception loss and a more intense evapotranspiration lead to a stronger exhaustion of the soil water content on average (Johnson et al. 2002). Nevertheless the soil storage capacity of those soils cannot reduce the discharge significantly for heavy rain events causing floods (Hegg et al. 2004, Lüscher 2003).

The vegetation types affect these processes strongly. For instance the shallow root system of spruce shapes a more slope-parallel macropore system benefiting the generation of quick lateral runoff (quick interflow) on the shallow soils (e.g. Uchida et al. 2005). Afforestation of those areas will influence the discharge only slightly, especially under wet conditions. Depending on the size of forested areas and other local conditions, a reduction of peak discharge from small to medium can be expected during heavy summer rainfall, which is confirmed by application of the model WASIM-ETH (Pöhler 2006). Due to the current knowledge it can be assumed, that forests on soils with layers of low hydraulic conductivity in depths between 30 and 50 cm, force flood generation (e.g. Hegg et al. 2004, Andreassian 2004).

From areas with minor slopes and loess or deep soils below extensively used grassland (Figure 1b, c) mainly delayed interflow originates (Höckenbach subcatchment 9%, Weißbach subcatchment 29 %, Weißeritz catchment 17%). This species-rich vegetation type is characterized by an intense well structured root system that is able to increase the porosity. Root hairs as well as fine roots in the upper layer (up to 30 cm) create fine and medium sized pores increasing the soil storage capacity. The large portion of middle and coarse roots and the deep root penetration together with numerous tubes of soil organisms provide for better infiltration and percolation (Doussan et al. 2003). Thus, the water flows laterally with time lag above deeper dense horizons.

In floodplain areas saturation overland flow from gleyic or fluvio genic soils are common runoff components (Figure 1a). Slow runoff components as delayed interflow, strongly delayed interflow and deep percolation occur generally on areas with minor slopes (0° ... 2°) as well as deep Cambisols and forest on ¼ of the total catchment area (Figure 6).

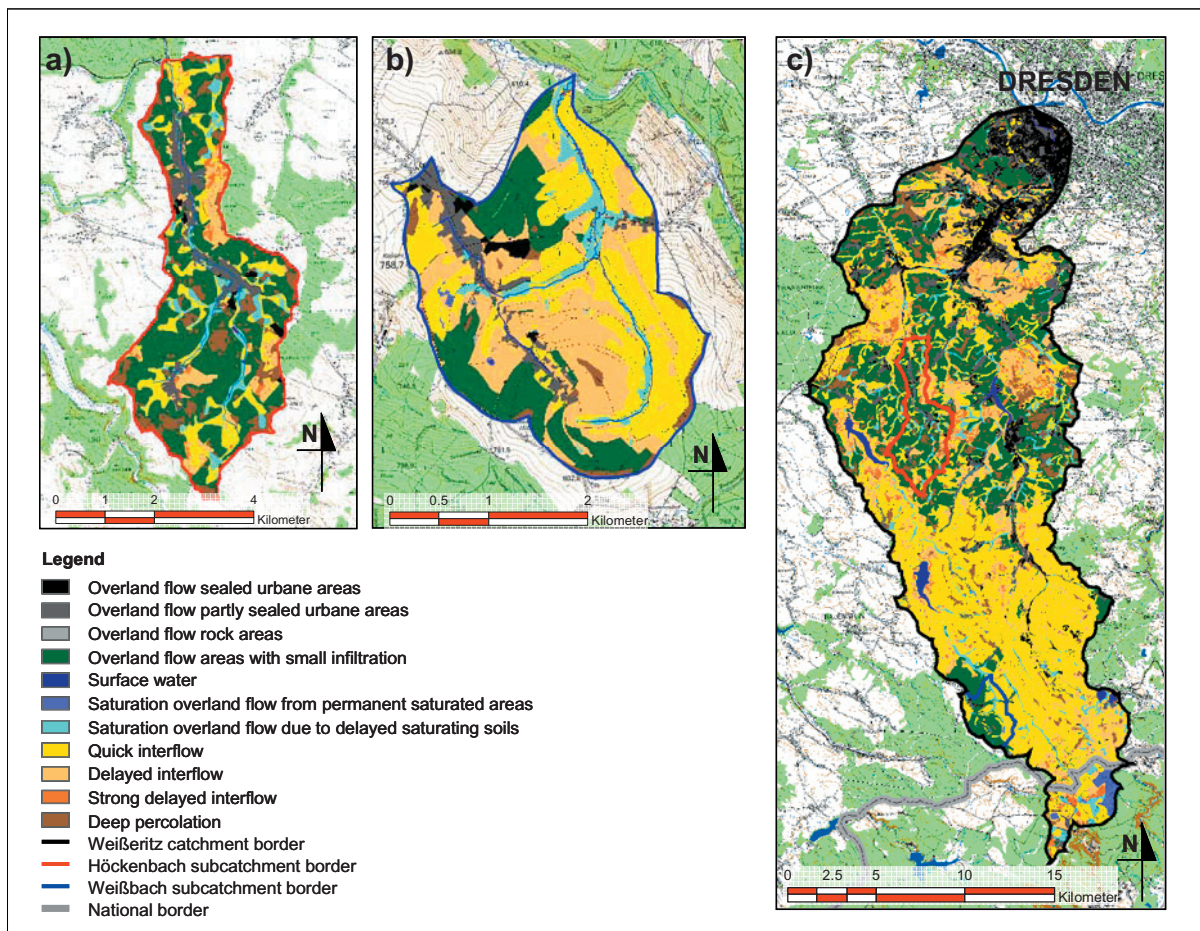


Figure 6: Spatial distribution of runoff generation processes resulting from the application of the Expert system FLAB; actual state. (a) Höckenbach subcatchment. (b) Weißbach subcatchment. (c) Weißeritz catchment

3.3 Land use scenarios

All land use scenarios were evaluated based on the detailed analysis of the actual state (Table 3). In both of the above mentioned subcatchments an area-wide biotope mapping was realised (Foltyn 2006).

Table 3: Land use scenarios of Höckenbach subcatchment and Weißbach subcatchment

Land use change	Höckenbach	Weißbach
	Scenario name	
Present land use (2004/2005)	HB pres	WB pres
Complete afforestation	HB c-aff	WB c-aff
Arable field into grassland	HB a-g	WB a-g
conservation tillage, intermediate crop	HB c-till	WB c-till
Ecological transformation of forests	HB tr-for	WB tr-for
Partial afforestation of areas delivering quick runoff components	HB p-aff	WB p-aff
Extensification of grasslands	-	WB g-ext
Nature conservation measures	HB nat	WB nat
Flood protection measures	HB flood	WB flood
Combination of nature conservation and flood protection measures	HB comb	WB comb

On the basis of these investigations common guidelines are developed and synergies are used between the issues of flood protection and nature conservation aiming at the demonstration of land use effects on runoff generation. Besides feasible scenarios based on the wishes of local stakeholders, reference scenarios (land use changes of areas with quick runoff components) and extreme scenarios (complete afforestation) were analysed. From the position of flood prevention the scenarios had to reduce the quick runoff components (surface runoff and quick interflow) as well as to delay the runoff concentration and to increase the soil storage capacity.

3.4 Assessment of land use scenarios

The runoff components identified by the WBS FLAB are subdivided into two groups according to their relevance to flood formation. The group “quick runoff components” contains surface runoff, saturation overland flow and quick interflow, the group “slow runoff components” delayed and strongly delayed interflow and deep percolation.

In the study areas Weißbach subcatchment and Höckenbach subcatchment the scenarios WB_flood und HB_flood are of high significance related to flood prevention. In the Weißbach subcatchment the area proportion with quick runoff components was reduced by 35% and in the Höckenbach subcatchment by 45% (Figure 7). The land use changes by the scenarios HB/WB_comb, HB/WB_nat und HB/WB_c-aff (Figure 7) enclose a large proportion of the research areas and therefore they are very effective concerning flood prevention in these regions. The differences between the several scenarios (<3%) are in between the error range of the model.

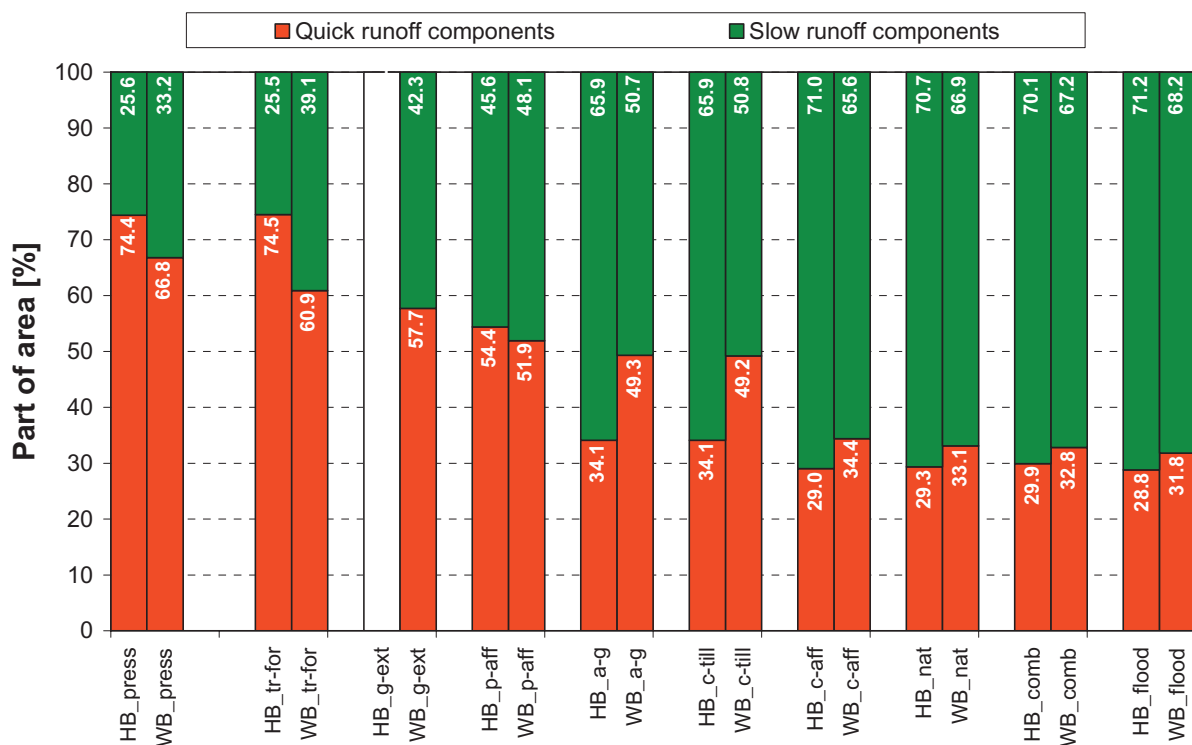


Figure 7: Comparison of the portion of area with slow runoff components and quick runoff components for the actual state and land use scenarios; Höckenbach subcatchment (HB) and Weißbach (WB) subcatchment

Relating to the restructured area the efficiency of the scenarios WB_a-g, WB_c-till und WB_p-aff (Figure 7) is very high. For the whole Weißbach subcatchment these measures reduce the quick runoff components by only approximately 16% compared to the actual state. A similar trend can also be observed with scenario WB_g-ext but with a reduction of only 10% of the quick runoff components it plays a minor role. The transformation of forests enhances the actual state by less than 6%, because of the steep slopes and the shallow soils. At such sites a transformation of spruce monoculture is not a

big advantage. In contrast agricultural crop land (69% of the total area) dominates in the Höckenbach subcatchment, thus the scenarios HB_a-g and HB_c-till (Figure 7) are of great relevance from the position of flood prevention. The quick runoff can be reduced by approximately 40% of the area. The partly afforestation (HB_p-aff) reduces the portion of areas with quick runoff components by 20%. Due to the currently small forests their transformation (HB-WU) does not affect the discharge compared to the actual state. From the position of erosion prevention the following scenarios are outstanding HB_flood, HB_comb, HB_nat, HB_c-aff, HB_a-g und HB_c-till, because a near complete elimination of surface runoff can be achieved.

The model WBS FLAB analyses the runoff generation processes and assesses the effectiveness of all scenarios in a qualitative way whereas the precipitation-runoff-model WASIM-ETH calculates the discharge in the river quantitatively, including the position of the runoff areas to the river, ground- and soil water conditions and river structure.

Several land use scenarios were simulated with WaSiM-ETH for some heavy rain events of different duration (10 minutes until 48 hours), different intensities (7.3 mm until 103.4 mm; KOSTRA-DWD-2000 2005) and temporal variability of a likelihood of 1 year until 100 years. Some selected examples for the Höckenbach subcatchment are discussed in detail. Deep soils dominate in this subcatchment (Figure 1a), therefore measures increasing the soil storage capacity decrease the peak discharge significantly (Figure 8). During summery intense but short rain events, the land use scenarios HB_a-g, HB_c-till, HB_c-aff, HB_nat, HB_comb and HB_flood reduce the maximum peak discharge from 10 to 30%, dependent on the dimension of the affected areas (Figure 8a). In case of rain events with longer duration and a more frequent reoccurrence interval (HQ 5) the peak discharge can be also reduced by 20% (Figure 8b). In contrast the measures effect the runoff generation process and the discharge only a little for longer lasting rain events with high intensity and long reoccurrence interval (HQ 100) (Figure 8c and d).

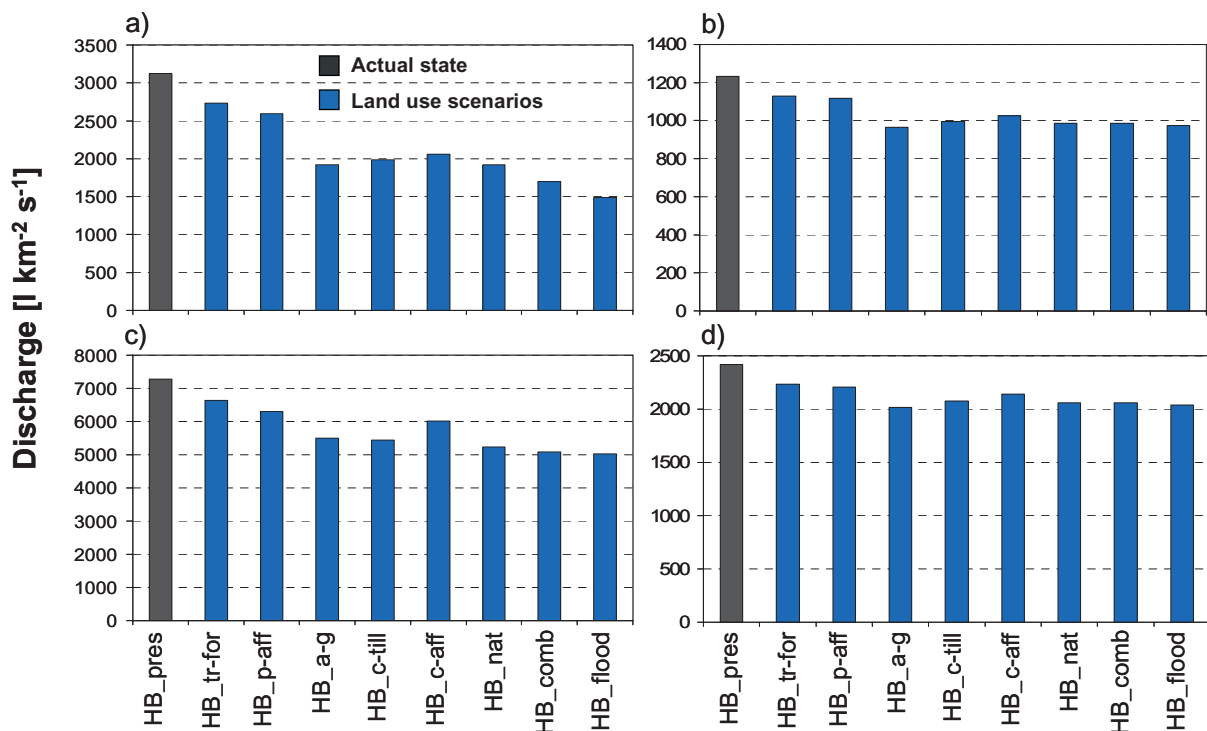


Figure 8: Comparison of the mean discharge of the Höckenbach subcatchment. (a) HQ5 – precipitation 10 minutes, 11.7 mm. (b) HQ100 – precipitation 10 minutes, 20.0 mm. (c) HQ5 – precipitation 48 hours, 60.7 mm. (d) HQ100 – precipitation 48 hours, 103.4 mm

To compare the effects of all scenarios from the different positions of nature conservation and flood prevention, the results of the application of both models WBS FLAB (reduction of areas with quick runoff components) and WASIM-ETH (reduction of peak discharge) are correlated.

Correspondingly there exists a significant relationship between these two parameters and the measures particularly for short intense precipitation events (HQ100/10min and HQ5/10min).

From the position of nature conservation all simulated land use scenarios come to an improvement (without total afforestation) compared to the actual state (Richert et al. 2007, Merta et al. 2006). The afforestation of the whole research area leads to a loss of biotope diversity.

The results of the project show that preventive flood protection is highly compatible with the demands of nature protection. Even land use changes, which consider nature conservation interests only, show an improvement in terms of flood protection. Conversely, a land use scenario which perfectly fits the requirements for flood protection can also substantially contribute to nature protection.

The analysed effects of land use changes are the greatest in small to medium-sized catchments and in the case of precipitation events with 5 to 50 year reoccurrence intervals. A reduction of as high as 5 to 10 per cent on average and 25 per cent at the most is possible. Based on these results and in relation to the present state, land use changes and alterations in cultivation practises are necessary on 25 to 50 per cent of the catchment area. Further positive synergetic effects include improved soil protection, balanced water supply as well as enriched natural scenery.

4 References

- [1] Andreassian, V. (2004): Waters and forests: from historical controversy to scientific debate. *J. Hydrol.* 291: 1-27
- [2] Doussan, C., L. Pages & A. Pierret (2003): Soil exploration and resource acquisition by plant roots: an architectural and modelling point of view. *Agronomie* 23: 419-431
- [3] Foltyn, M. (2006): Landschaftsökologische Analyse des Einzugsgebietes des Höckenbachs (Erzgebirge) auf Grundlage einer Biotoptypenkartierung. Studienarbeit, AG Biologie/Ökologie der TU Freiberg
- [4] Hegg, C., A. Badoux, P. Lüscher & J. Witzig (2004): Zur Schutzwirkung des Waldes gegen Hochwasser, *Forum für Wissen* S.15-20
- [5] Johnson-Maynard J.L., R.C. Graham, L. Wu & P.J. Shouse (2002): Modification of soil structural and hydraulic properties after 50 years of imposed chaparral and pine vegetation. *Geoderma* 110: 227–240
- [6] KOSTRA-DWD-2000 (2005): Starkniederschlagshöhen für Deutschland (1951 – 2000). Grundlagenbericht. Offenbach am Main, 2005
- [7] Kurz I., C.D. O'reilly & H. Tunney (2006): Impact of cattle on soil physical properties and nutrient concentrations in overland flow from pasture in Ireland. *Agric. Ecosys. Environ.* 113: 378–390
- [8] Lüscher, P. & K. Zürcher (2003): Hochwasserschutz im Wald. *Berichte aus der Bayerischen Landesanstalt für Wald und Forstwirtschaft*, Bericht Nr. 40
- [9] Mannsfeld, K. & H. Richter (Hrsg.) (1995): Naturräume in Sachsen. *Forschungen zur deutschen Landeskunde*, Band 238. Zentrallausschuss für deutsche Landeskunde, Trier
- [10] Merta, M., C. Seidler, S. Bianchin & E. Richert (2006): Analysis of land use change in the Eastern Ore Mountains Regarding both nature protection and flood prevention. In: DKW-Series (2007) 'Progress in Hydro Sciences and Engineering', Dresden Water Center. TU Dresden (in print).
- [11] Merta, M., C. Seidler, S. Uhlenbrook, N. Tilch, B. Zillgens & R. Kirnbauer (2003): Das Wissensbasierte System FLAB als Instrument zur prozessbezogenen Raumgliederung von mesoskaligen Einzugsgebieten. In: Kleeberg (Hrsg.): *Klima-Wasser-Flussgebietsmanagement – im Lichte der Flut. Beiträge zum Tag der Hydrologie am 20./21. März 2003 in Freiburg*. *Forum für Hydrologie und Wasserbewirtschaftung*, Bd. 1: 171 – 178
- [12] Niehoff, D. (2001): Modellierung des Einflusses der Landnutzung auf die Hochwasserentstehung in der Mesoskala. – Dissertation, Mathem.-Naturw. Fakultät der Univ. Potsdam
- Peschke, G., C. Etzenberg, J. Töpfer & S. Zimmermann (1999): Das wissenschaftliche System FLAB – ein Instrument zur rechnergestützten Bestimmung von Landschaftseinheiten mit gleicher Abflussbildung, *IHI Schriften*, Heft 10, Zittau

- [13] Pöhler, H. (2006): Anpassung von WaSiM-ETH und die Erstellung und Berechnung von Landnutzungs- und Klimaszenarien für die Niederschlag-Abfluss-Modellierung am Beispiel des Osterzgebirges. Fakultät für Geowissenschaften, Geotechnik und Bergbau. TU Bergakademie Freiberg. Dissertation
- [14] Richert, E., S. Bianchin, G. Hammer, H. Heilmeyer, J. Matschullat, M. Merta & Ch. Seidler (2007): Hochwasser- und Naturschutz im Weißeritzkreis (HochNatur). - Endbericht an die Deutsche Bundesstiftung Umwelt, (in prep).
- [15] Rossmann, L. A. (2005): Storm Water Management Model - User's Manual Version 5.0. EPA, United States Environmental Protection Agency, EPA/600/R-05/040
- [16] Schobel, S., J. Altmeier, R. Schneider & D. Schröder (2001): Infiltrations- und Bodenabflussprozesse bei unterschiedlicher Landnutzung und verschiedenen Substraten. Mitteilungen der Bodenkundlichen Gesellschaft 96: 119-120
- [17] Schulla, J. & K. Jasper (2006): Model Description WaSiM-ETH. Internal report, IAC, ETH Zürich, 174 pp. last update December 2006
- [18] Schulla, J. (1997): Wasserhaushalts-Simulations-Modell WaSiM-ETH - Anwenderhandbuch. ETH Zürich.
- [19] Sloboda, B. & C. Leuschner (2002): Numerische Simulation des hydraulischen Systems Baum-Boden bei der Traubeneiche (*Quercus petraea* (Matt.) Liebl.), Georg-August-Universität Göttingen, Institut für Forstliche Biometrie und Informatik, Abschlussbericht zum Forschungsprojekt, Göttingen
- [20] Uchida, T., I. Tromp, V. Meerveld & J. Mc Donell (2005): The role of lateral pipe flow in hillslope runoff response: an intercomparison of non-linear hillslope response. *J. Hydrol.* 311: 117-133
- [21] Zimmermann, B., H. Elsenbeer & J.M. De Moraes (2006): The influence of land-use changes on soil hydraulic properties: Implications for runoff generation. *For. Ecol. Manage.* 222, pp. 29-38
- [22] Zimmermann, S., J. Töpfer & G. Peschke (2001): A knowledge-based system to improve the processing of distributed precipitation-runoff models. In: „Runoff generation and implications for river basin management/modelling“. *Proceed. Of the IAHS/ICT/ICSW Freiburg workshop October 9 – 12, Freiburger Schriften zur Hydrologie Bd. 13, 175 – 182.*